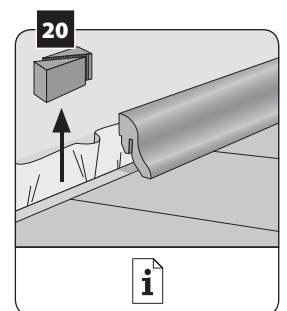
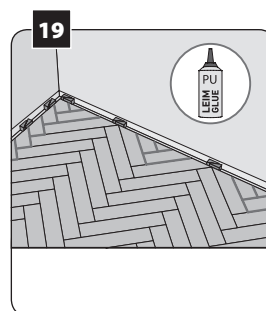
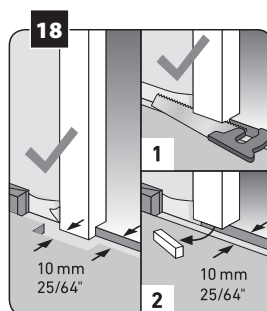
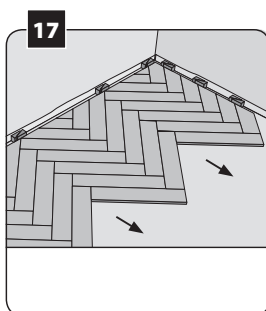
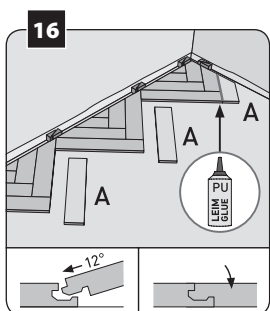
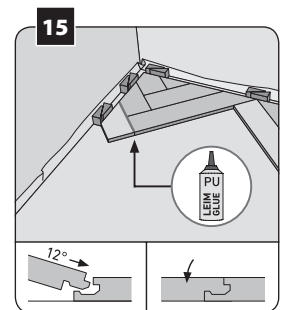
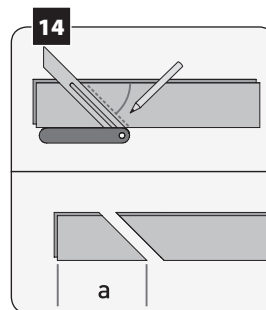
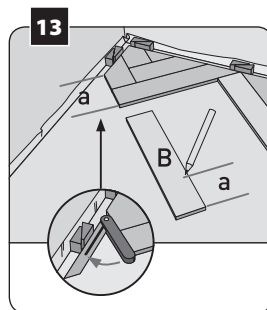
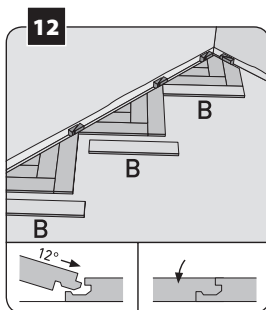
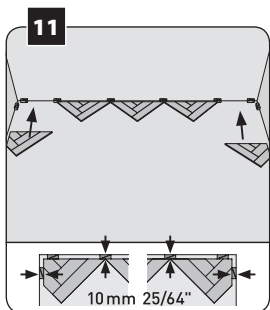
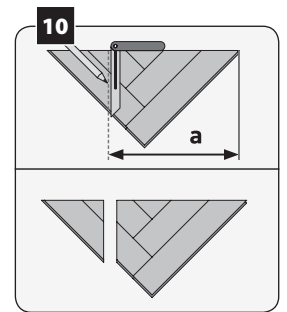
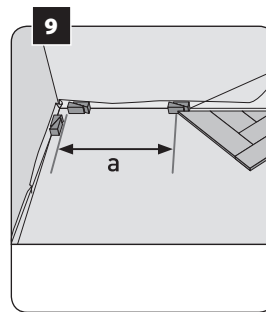
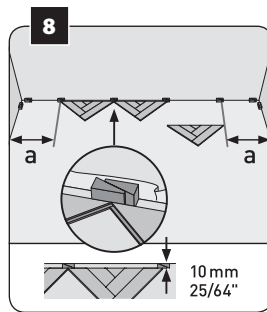
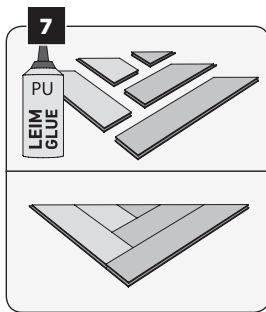
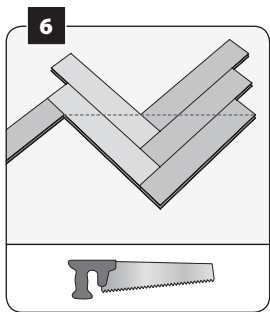
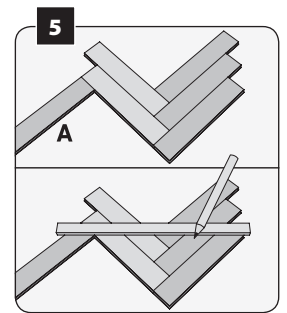
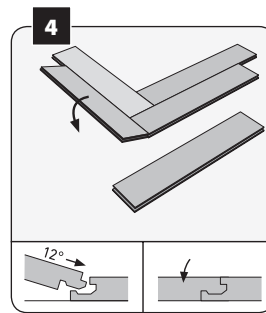
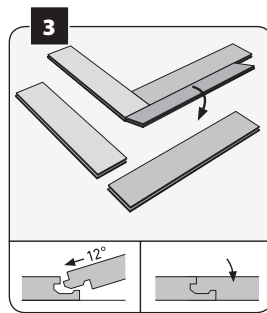
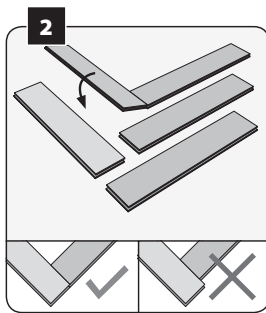
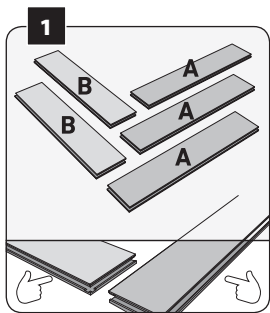
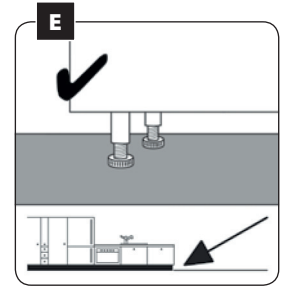
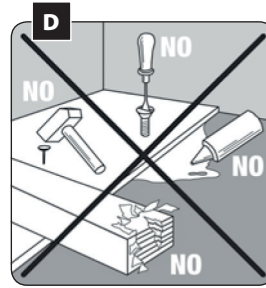
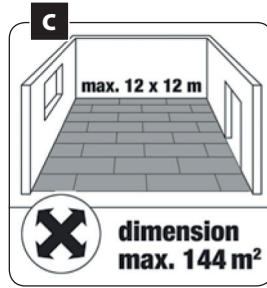
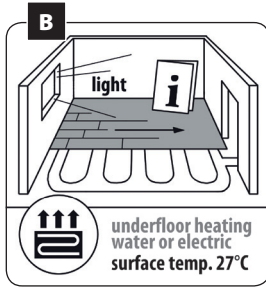
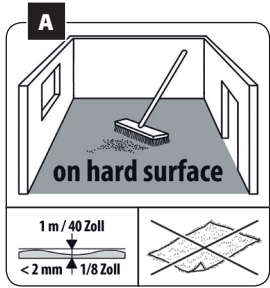


VERLEGEANLEITUNG

HERRINGBONE

SEITE 1

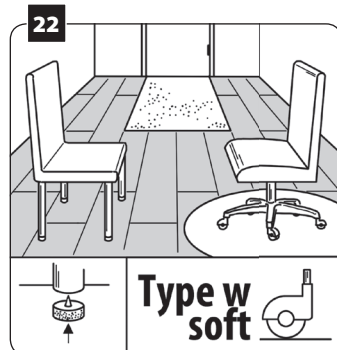


VERLEGEANLEITUNG

HERRINGBONE

SEITE 2

the floor

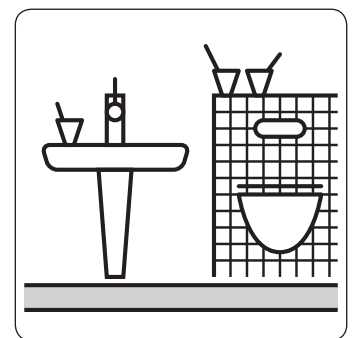
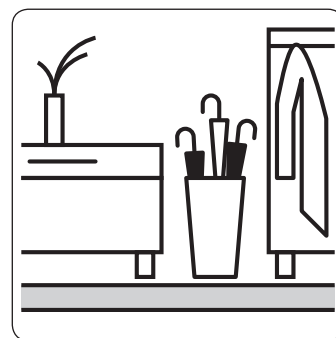
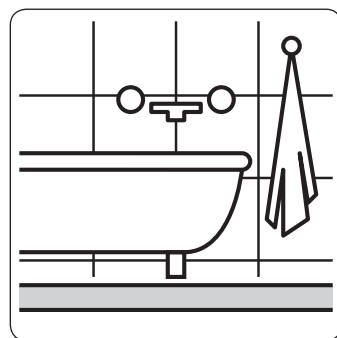


WICHTIG

Bitte Verarbeitungshinweise des Klebstoffherstellers unbedingt beachten!

IMPORTANT

Please follow up the processing instructions from the glue manufacturer!

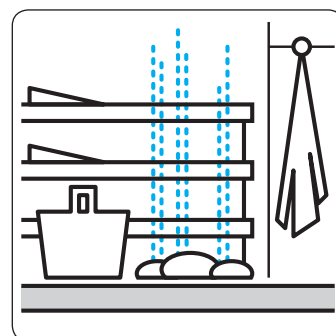
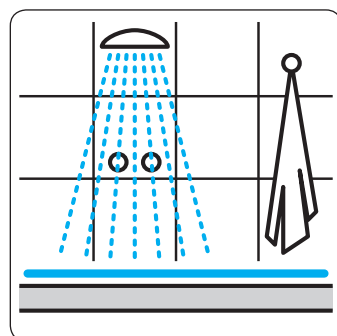
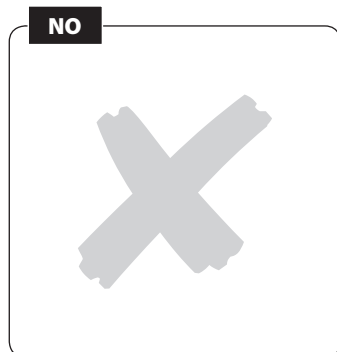


WICHTIG

Bei Verlegung in Nassbereichen bitte **DIN 18534** beachten.

IMPORTANT

Installation in wet areas please see **DIN 18534**.



FALQUON GmbH
Am Hünengrab 18
D-16928 Pritzwalk
Gewerbegebiet Falkenhagen
+ 49 33986 502110 / info@falquon.de
www.falquon.de / www.the-floor.eu

